

Pre-Proposal Conference

November 19, 2008

**RFQ for Master Architect for Campus Planning and Hospital
Design**

RFP for CM –at-Risk

RFP for Program Controls Manager



Parkland



Program Controls Manager

Services Provided: Design & Implementation of Program Controls

Selection Method: Best Value Based on Qualifications & Estimated Cost

Master Architect for Campus Planning & Hospital Design

Services Provided: Architecture/Engineering for Acute Care Hospital
Campus Planning

Selection Method: Qualifications Based as Required by TGC 2254

Construction Management at Risk

Services Provided: Construction of Acute Care Hospital
Preconstruction Services
Guaranteed Maximum Price at Design Development
All Savings Returned to Parkland

Selection Method: Best Value Based on Qualifications, Fees and General Conditions



Vision - The latest, large, “hospitals of the future” completed today seem to have taken 8 to 10 years on average to get from design to opening. These are excellent achievements, but in some respects, they might be “hospitals of the *time*”. We intend to construct a hospital *for* the future of Dallas County. We, therefore, are looking for firms that can demonstrate forward-thinking, innovation, inventiveness, and even creativity as the norm and not a specialty service.



Expertise - We define expertise as your applied knowledge and skill for our project. We are looking for firms that bring the full, comprehensive depth of their experience to the table from all of their resources. That may include resources outside of healthcare if it provides an appropriate solution to an issue we may not recognize we have. We are looking for firms that will not always take us at face value, and will translate our needs into a solution and not just transcribe them. And, we are looking for firms with design management expertise to execute the project using methods that ensure completion in a timely manner. We expect to get everything a firm has to offer applied to this engagement.



Quality

Parkland has one standard of measure for quality. Our Hospital vision statement reads:

By our actions, we will define the standards of excellence for public academic health systems.

Our guiding principles state:

Our values and principles reflect our shared responsibility to achieve health care excellence for our patients and communities

One of our Circles of Excellence reads:

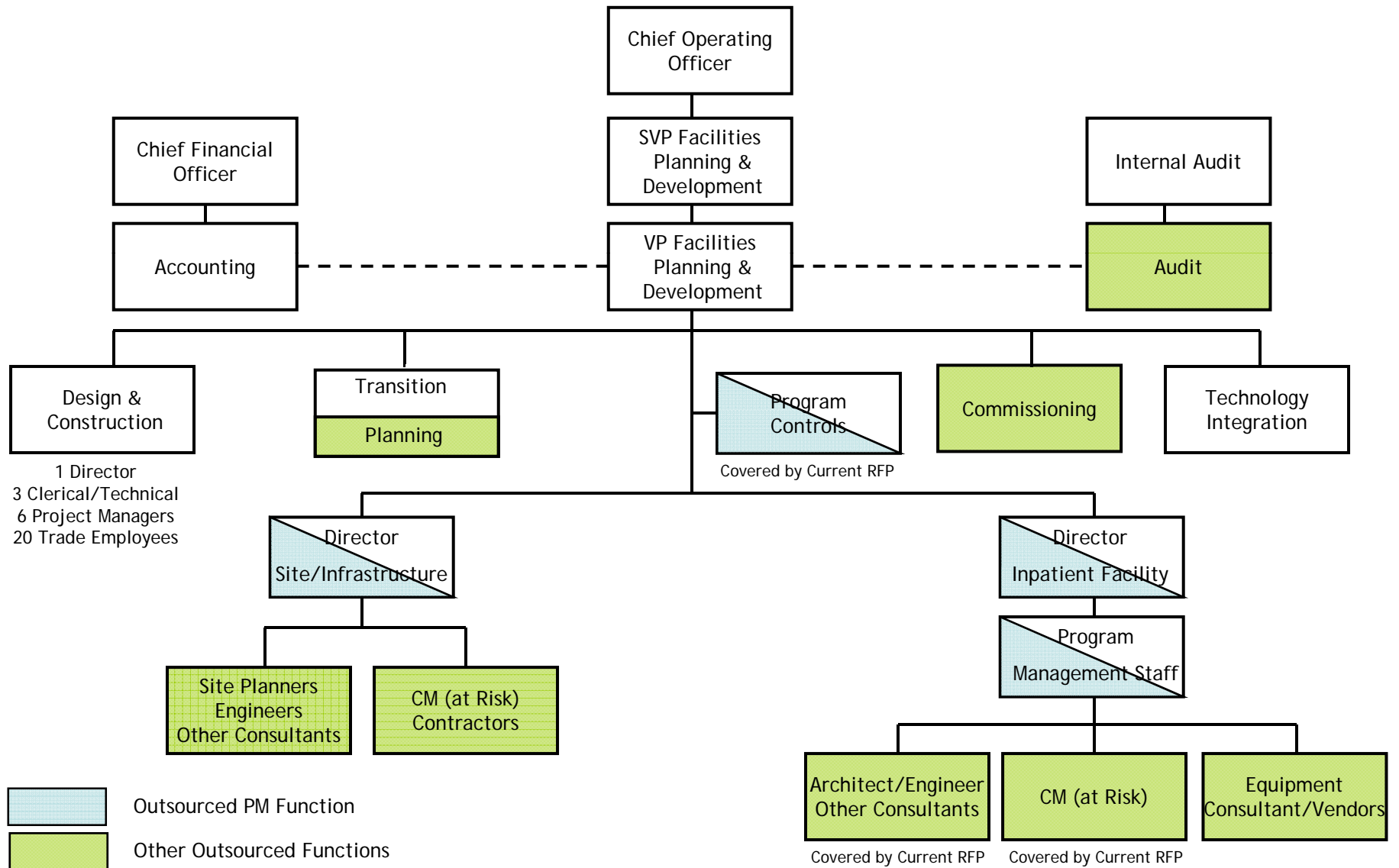
We will provide high standards of service and performance

We will, therefore, expect the same from our consultants.



Service	Date Due	Short List	Proposals Received	Interviews & Selection	Board Contract Approval
Program Controls	12/11/08	1/5/09	2/28/09*	3/31/09*	April 09*
Master Architect	12/11/08	1/5/09	2/28/09	3/31/09	April 09
CM at Risk	12/11/08	1/5/09	2/28/09	3/31/09	April 09

* We are evaluating options to move these dates up





CM and Architect Selection Assistance	January 2009
Program Cost Estimate	January 2009
Schematic Design Review	April 2009
Code Review	June 2009
Staff Augment Program Management	June 2009
Equipment Procurement Staff	October 2010*

* Phased in over 18 months

Legal Support	November 2008
Program Risk Management Support	December 2008
Logistics Consultant	March 2009
Utilities Master Planner	March 2009
Technology Integration Consultant	June 2009
Commissioning Agent	June 2009
Equipment Planner	October 2009
Audit	June 2010
Transition Planner	March 2012



Parkland

“New Parkland” Website

www.parklandhospital.com/replacement



Parkland

Nov 26 - Deadline for written questions

Parkland will post questions and answers that were recorded during the conference at

http://www.parklandhospital.com/replacement/reference_docs