

# About Your Urodynamic Study



IH-III-69  
W.D. 7/04  
Pg. 1 of 2

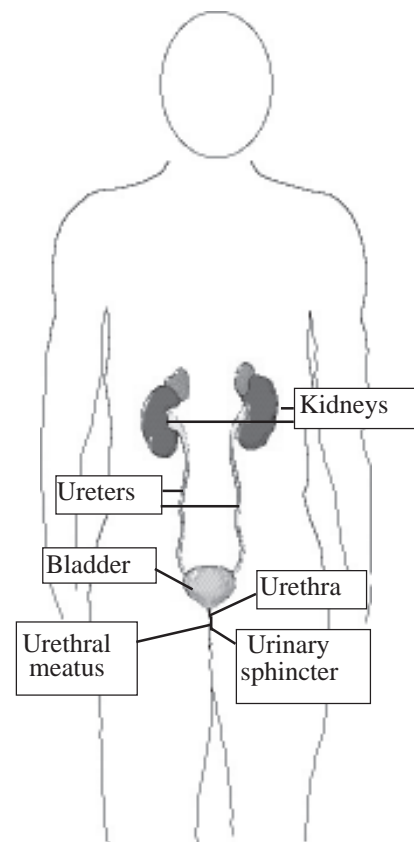
## What is a Urodynamic Study?

A Urodynamic Study is a set of tests and x-rays that help your health care provider see in detail how your bladder, urethra and sphincters are working.

These tests help to find out why you are having problems holding on to your urine (pee) or with urinating (peeing).

When a urodynamic study is done:

- Two small catheters (tubes) are used. One is put in your bladder and the other is put into your rectum (where your bowel movements come out).
- The tube that is put into your bladder will be filled with a cup of sterile water. These tubes help check how your bladder is doing as it is being filled up.
- Once your bladder is filled, x-rays are taken while you cough or push down as if you were trying to have a bowel movement.
- This test will show why you are having a problem with urine (pee) leaking.
- In the last part of the test, you will need to urinate (pee) while the tube is still in your bladder.



The Urinary System

The whole test will take about 30 - 45 minutes. When it is done, your health care provider will talk to you about what kinds of treatments may work best for you.

(over)

## **Here are some words you'll want to understand:**

Catheter - a thin, soft tube that is put into your bladder so urine (pee) can drain out.

Electrode - a little patch that measures how well your muscle is working.

Neurogenic bladder - when there is no control of the flow of urine (pee) because the nerves that tell the sphincter what to do are damaged.

Urologist - a doctor whose specialty is the urinary system in men and women, and in the reproductive system (the body parts that have to do with making a baby) in men.

Void - to pass urine (pee) from your bladder to the outside of your body, to urinate.

**If you have any questions, now or after the tests, please call the  
Outpatient Nurses Station at (214) 590-3706**